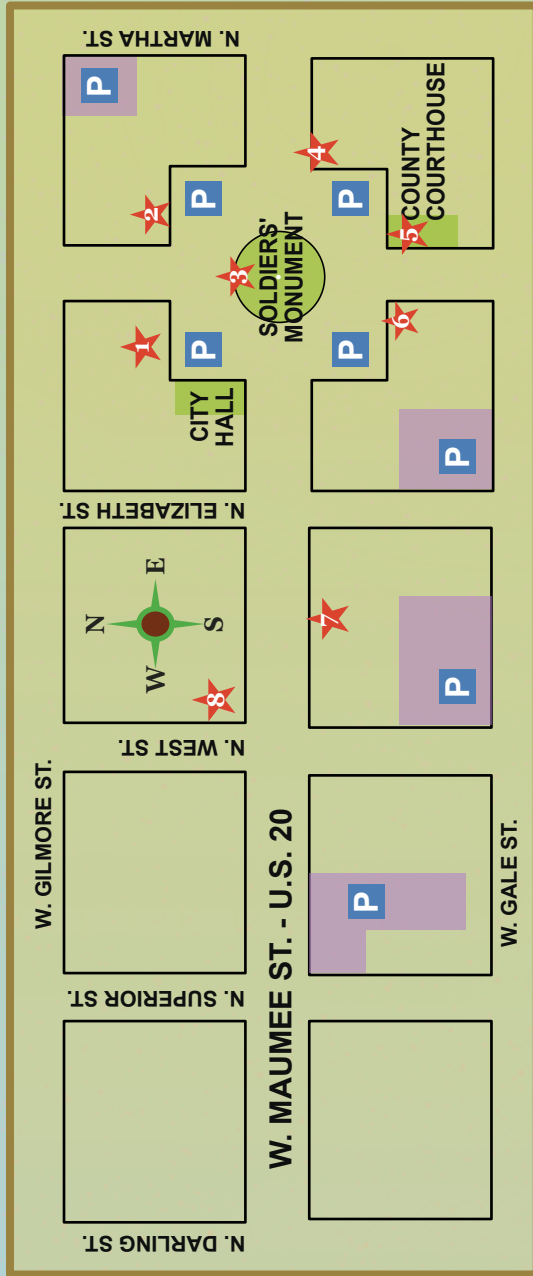


ANGOLA

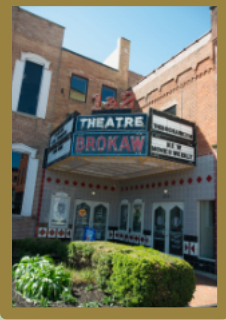


DOWNTOWN HISTORIC TOUR



1

200 N. Public Sq.
C.1910 Commercial
Italianate/Functional
Contributing



In 1931 the Brokaw Theatre was opened by Joe Brokaw. The marquee features porcelain and enamel steel letters outlined in neon. It was renovated in the late 2010's.

2

100-130 N. Public Sq.
C.1885 Commercial
Italianate
Contributing



Known as the Opera House Block at the turn of the 19th century, it was the home of the first theater with headliners including Sara Bernhardt, Lionel Barrymore and Booker T. Washington.

3

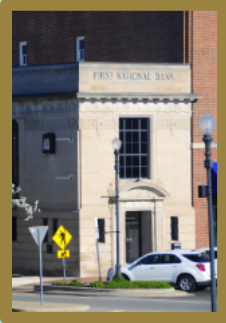
Soldiers' Monument
C.1917 Classical Revival
Contributing



The land on which the monument stands is known as the "mound" to locals. The monument, erected in 1917, it is a testament to those who fought for the Union and their families. Steuben County contributed more soldiers than any other county in Indiana.

4

15 S. Public Sq.
C.1925 Commercial Beaux
Arts
Outstanding



This building housed the First National Bank of Fremont. Built with Indiana Limestone, its architecture contains a mix of historical elements. It's appearance and style make it stand apart from brick buildings in downtown Angola.

WELCOME

COMMERCIAL HISTORIC DOWNTOWN ANGOLA

5

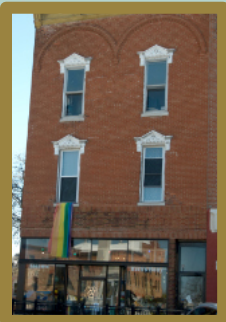
55 S. Public Sq.
C.1868 Italianate/Gothic
Revival Outstanding



Built on donated land, the Steuben County Court House originally cost \$27,000 to build. It's said to be styled after Faneuil Hall in Boston. It has remained on this site for over 100 years. As of April 2024, it was still used as the County Court House.

6

65 S. Public Sq.
C.1875 Commercial
Italianate
Contributing



This building, where formerly a two-story wooden building that burned stood, was the home of Angola's first telephone company, the Knights of Pythias, and Bassett's Restaurant.

7

217 W. Maumee St.
C.1925 Commercial



Currently housing a local hobby shop, this 1930's art deco building housed many automobile dealers from 1930- the mid-1950's the building was then converted for restaurant use until 1962.

8

220 W. Maumee St.
C.1889 Late Gothic;
Revival



A feature of the Methodist Church building is its beautiful stained-class windows and tower, which originally had a broach spire, but was modified over the years to where today it resembles a cap of the tower.